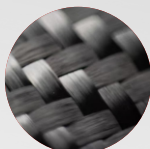


RC-iLHolo3.9



LIGHTER

-Weight $\leq 3.7\text{kg/panel}$



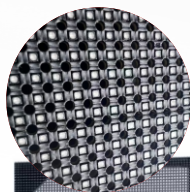
STRONGER



THINNER

- Super slim- 63.6mm depth

Full Carbon Frame	Modular Design	Curveable
90°Corner	Front&Rear Maintenance	High transparency



Perforated PCB design



RC-Holo is an ultra-lightweight and ultra-slim LED display rental product featuring a single-molded carbon frame structure and perforated module design, achieving an exceptionally light weight of 3.7kg/panel & 7.4kg/m². It represents a breakthrough product in terms of both extreme light weight and high structural strength.

With its micro driver IC on board technology and specialized coating, the display ensures outstanding visual performance and reliability, making it the ideal choice for rental and any lightweight applications.

Redot is a specialized manufacturer of ultra-lightweight carbon fiber LED displays, uniquely integrating LED display technology, in-house carbon frame production, and innovative design.

Specifications

Product name	RC-iLHolo3.9
LED configuration	R,G,B in SMD 1515 Black
Pixel Pitch	3.91mm
Pixel Density	65536/ sqm
Cabinet Resolution(W*H)	256x128
LED Cabinet Size(W*H*D)	1000x500mmx63.6mm(500x500mm cabinet available)
Cabinet Area	0.5sqm 5.38sqft
Module Resolution(W*H)	128*32
Module Size(W*H)	500x125mm
Modules Nurmber (W*H)	2x4
Viewing Angle	160°H/160°V half brightness point
Brightness Calibrated	1000nits
Cabinet Material	Carbon Fiber
Cabinet Weight	≤3.7kg
Cabinet weight(per sqm)	≤7.4kg
Physical Transparency	20% (optional masks or removable back covers for use as solid)
Tensile strength	1300 kgf
Line Voltage	90VAC~264VAC,50/60Hz
Service Access	Front&Rear
Curving	Concave 10°,5°, Convex 10°,5°
IP Rate(Front&Rear)	IP40
Scan Ratio	1/16
Refresh Rate	7680Hz
Power Consumption,Maximum (watts)	280w/cabinet 560W/sqm
Power Consumption,Typical (watts)	140w/cabinet 280W/sqm
Operating Temp/Humidity	-20°C~45°C -4° to 113° F 10%~80%RH
Storage Temp/Humidity	-40°C~60°C -40° to 140° F 10%~90%RH (non condensing)
Color temperature Adjustable(k)	3000-9000
HDR Rendering	HDR Capable
Environmental	Indoor
Acoustic Noise	Fanless Operation
Compliance	CE/EMC/LVD
Installation	Hanging
Max. Hanging(Panels)	30 panels with safety factor 11